



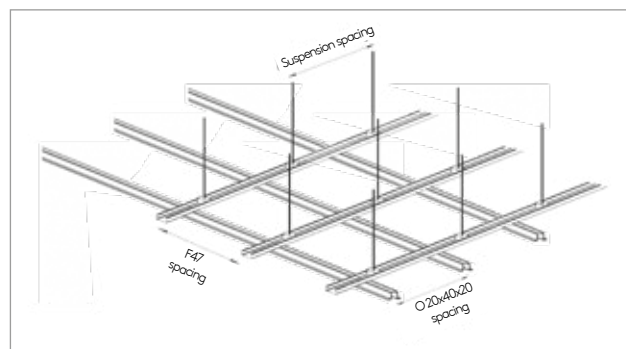
# FALSE CEILING F47/17R + OM 20X40X20

## GENERAL DESCRIPTION OF THE SYSTEM

■ Kingspan's F47/17R + OM 20x40x20 system has been designed to support a false ceiling made of boards and an insulation layer (mineral wool or alike). It consists of a grid of galvanized steel profiles: the main runners are made up of F47/17R rails, while the cross profiles are made up of Omega OM 20x40x20.

■ DX51 steel profiles, hot dipped galvanised Z140. Quality certified steel rolled by the leading European company.

## ASSEMBLY SKETCH AND ALLOWABLE SPANS



## JOINTS AND SUSPENSION

■ The upper profiles - F47/17R rails- are suspended from the slab by means of TZ hangers, fixed by clipping on the rail flanges, and M6 threaded rod with nut and lock nut.

■ The OM 20x40x20 profiles are fixed to the F47 /17R rails using self-drilling screws. Two M5.5 self-drilling screws must be placed in each joint between profiles, fixing the OM profile web to the F47 rail web. The screws will be arranged at least 2 cm apart.

■ Finally, the boards are fitted onto the flanges of the Omega profiles. The insulating layer, if used, is placed over the boards.

### ALLOWABLE LOAD < 0.28 kN/m<sup>2</sup>

F47/17R Maximum spacing	OM 20x40x20 Maximum spacing	Suspension maximum spacing
0.40 m	1.20 m	0.60 m

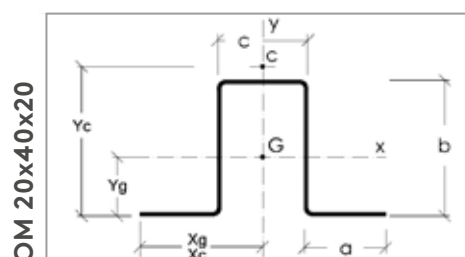
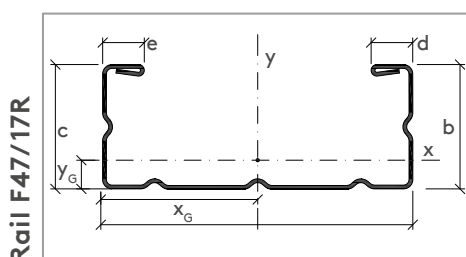
## MAXIMUM LOADS

■ Kingspan's F47 / 17R + Omega 20x40x20 false ceiling system has been designed to withstand a maximum load of 0,28 kN/m<sup>2</sup> (≈ 28 kg/m<sup>2</sup>), considering the weight of the ceiling boards and a mineral wool (or alike) insulation layer. Any other load, such as equipments, must be suspended from the structural slab by other means, aside from Kingspan's false ceiling system.

■ The design load will be obtained by adding the weights of the boards and the insulation layer. The final load will be factored by a safety factor of 1,35.

## TABLE OF GROSS MECHANICAL PROPERTIES OF THE PROFILES

PROFILE	Section dimensions					th.	Self weight	Area	Y <sub>0</sub>	X <sub>0</sub>	Axis y-y			Axis x-x			Y <sub>c</sub>	X <sub>c</sub>	I <sub>y</sub>	I <sub>x</sub>
	a	b	c	d	e						I <sub>y</sub>	I <sub>y</sub>	W <sub>y</sub>	I <sub>x</sub>	I <sub>x</sub>	W <sub>x</sub>				
F47/17R	47	18	18	6	6	0.60	0.47	60.39	6.54	23.50	20,547.3	18.45	874.35	2,938.9	6.98	256.55	9.26	23.50	7.25	1,450.68
OM 20x40x20	20	40	20	-	-	0.80	0.84	107.34	17.08	29.20	18,865.3	13.26	646.07	24,229.6	15.02	1,057.1	43.03	29.20	22.90	4,096.63
	mm	mm	mm	mm	mm	mm	kg/ml	mm <sup>2</sup>	mm	mm	mm <sup>4</sup>	mm	mm <sup>3</sup>	mm <sup>4</sup>	mm	mm <sup>3</sup>	mm	mm	mm <sup>4</sup>	x10 <sup>8</sup> mm <sup>4</sup>



Teczone Española S.A.U. reserves the right to modify the contents of this document without any prior warning. Every effort has been made to ensure that the content of this publication is accurate, but Teczone Española S.A.U. and its affiliated companies are not responsible for errors or information that may be misleading. Suggestions regarding the final use or application of the products or work methods are merely informative and Teczone Española S.A.U. and its affiliates do not accept any responsibility in this regard.