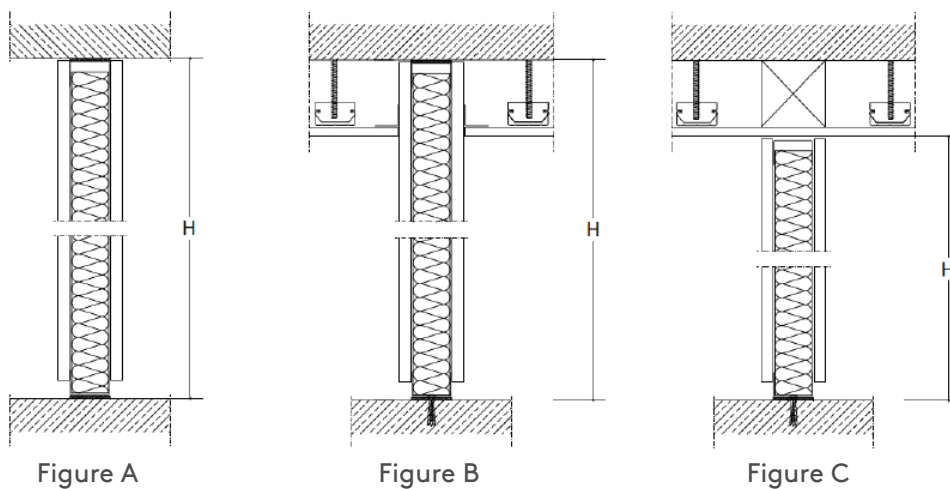


# DRYWALL MAXIMUM HEIGHT SINGLE STUD FRAME PARTITIONS

## GENERAL CONDITIONS

- Maximum heights indicated in meters and calculated according to the recommendations of ATEDY (Gypsum Business Technical Association).
- The maximum estimated heights are valid under assembly conditions included in standard EN 102.040 IN.
- Maximum heights valid provided that the gypsum boards covers the entire height of the partition and that the anchors to perimeter elements are rigid and resistant.
- The maximum height H is defined as the distance between the upper and lower rail, both anchored to resistant construction elements (figures a and b). In the event that the upper channel is not anchored to the slab (figure c), it will be necessary to have an element that stiffens the meeting of the upper channel.



# DRYWALL MAXIMUM HEIGHT SINGLE STUD FRAME PARTITIONS

SINGLE STUD FRAME PARTITIONS MAXIMUM HEIGHT (m)			Gypsum boards total thickness in each side (mm)									
			12,5 ≤ t < 18		18 ≤ t < 25		25 ≤ t < 30,5		30,5 ≤ t < 36		36 ≤ t	
Stud	Inertia (cm <sup>4</sup> )	Spacing Assembly	600	400	600	400	600	400	600	400	600	400
M-36/36	1.47	Simple [	2.21	2.44	2.47	2.73	2.65	2.93	2.82	3.13	2.96	3.27
		Double ][	2.62	2.90	2.94	3.25	3.15	3.48	3.36	3.72	3.52	3.89
M-36/40	1.65	Simple [	2.27	2.51	2.54	2.81	2.72	3.02	2.91	3.22	3.04	3.37
		Double ][	2.70	2.99	3.02	3.35	3.24	3.59	3.46	3.82	3.62	4.00
M-48/36	2.87	Simple [	2.61	2.88	2.92	3.23	3.13	3.46	3.34	3.69	3.49	3.86
		Double ][	3.10	3.43	3.47	3.84	3.72	4.12	3.97	4.39	4.15	4.60
M-48/40	3.21	Simple [	2.68	2.97	3.00	3.32	3.22	3.56	3.43	3.80	3.59	3.98
		Double ][	3.19	3.53	3.57	3.95	3.83	4.23	4.08	4.52	4.27	4.73
M-48/50	3.86	Simple [	2.81	3.11	3.14	3.48	3.37	3.73	3.59	3.98	3.76	4.16
		Double ][	3.34	3.69	3.74	4.14	4.01	4.43	4.27	4.73	4.47	4.95
M-62/36	5.18	Simple [	3.02	3.34	3.38	3.74	3.63	4.01	3.87	4.28	4.05	4.48
		Double ][	3.59	3.98	4.02	4.45	4.31	4.77	4.60	5.09	4.81	5.33
M-62/40	5.76	Simple [	3.10	3.43	3.47	3.85	3.72	4.12	3.97	4.39	4.16	4.60
		Double ][	3.69	4.08	4.13	4.57	4.43	4.90	4.72	5.23	4.94	5.47
M-62/50	6.89	Simple [	3.24	3.59	3.63	4.02	3.89	4.31	4.15	4.59	4.35	4.81
		Double ][	3.86	4.27	4.32	4.78	4.63	5.12	4.94	5.46	5.17	5.72
M-70/36	7.01	Simple [	3.26	3.61	3.65	4.04	3.91	4.33	4.17	4.62	4.37	4.83
		Double ][	3.87	4.29	4.34	4.80	4.65	5.15	4.96	5.49	5.19	5.75
M-70/38	7.40	Simple [	3.30	3.65	3.70	4.09	3.96	4.39	4.23	4.68	4.43	4.90
		Double ][	3.93	4.35	4.40	4.87	4.71	5.22	5.03	5.56	5.26	5.82
M-70/40	7.74	Simple [	3.34	3.70	3.74	4.14	4.01	4.43	4.27	4.73	4.47	4.95
		Double ][	3.97	4.39	4.45	4.92	4.77	5.27	5.08	5.63	5.32	5.89
M-70/50	9.21	Simple [	3.49	3.86	3.91	4.32	4.19	4.63	4.46	4.94	4.67	5.17
		Double ][	4.15	4.59	4.65	5.14	4.98	5.51	5.31	5.88	5.56	6.15
M-90/36	12.52	Simple [	3.77	4.17	4.22	4.67	4.52	5.00	4.82	5.34	5.05	5.59
		Double ][	4.48	4.96	5.02	5.55	5.38	5.95	5.73	6.35	6.00	6.64
M-90/40	13.77	Simple [	3.86	4.27	4.32	4.78	4.63	5.12	4.94	5.46	5.17	5.72
		Double ][	4.59	5.08	5.14	5.69	5.50	6.09	5.87	6.50	6.15	6.80
M-90/50	16.20	Simple [	4.02	4.45	4.50	4.98	4.82	5.34	5.14	5.69	5.38	5.96
		Double ][	4.78	5.29	5.35	5.92	5.73	6.34	6.12	6.77	6.40	7.08
M-100/36	15.92	Simple [	4.00	4.43	4.48	4.96	4.80	5.31	5.12	5.67	5.36	5.93
		Double ][	4.76	5.26	5.33	5.90	5.71	6.32	6.09	6.74	6.37	7.05
M-100/40	17.41	Simple [	4.09	4.53	4.58	5.07	4.91	5.43	5.24	5.79	5.48	6.07
		Double ][	4.86	5.38	5.45	6.03	5.84	6.46	6.23	6.89	6.52	7.21
M-100/50	20.46	Simple [	4.26	4.71	4.77	5.28	5.11	5.66	5.45	6.03	5.71	6.32
		Double ][	5.06	5.60	5.67	6.28	6.08	6.73	6.48	7.17	6.79	7.51
M-125/40	29.39	Simple [	4.66	5.16	5.22	5.78	5.59	6.19	5.97	6.60	6.25	6.91
		Double ][	5.54	6.14	6.21	6.87	6.65	7.36	7.10	7.85	7.43	8.22
M-125/50	34.23	Simple [	4.84	5.36	5.42	6.00	5.81	6.43	6.20	6.86	6.49	7.18
		Double ][	5.76	6.37	6.45	7.14	6.91	7.65	7.37	8.16	7.72	8.54
M-150/40	45.36	Simple [	5.20	5.75	5.82	6.44	6.24	6.90	6.65	7.36	6.96	7.71
		Double ][	6.18	6.84	6.92	7.66	7.42	8.21	7.91	8.75	8.28	9.16
M-150/50	52.39	Simple [	5.39	5.96	6.03	6.68	6.46	7.15	6.90	7.63	7.22	7.99
		Double ][	6.41	7.09	7.18	7.94	7.69	8.51	8.20	9.08	8.58	9.50

Kingspan reserves the right to modify the contents of this document without any prior warning